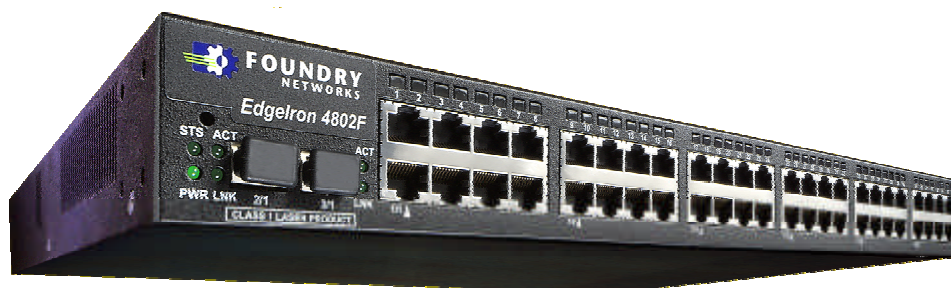


DATA SHEET

EdgeIron 4802F



The EdgeIron 4802F Layer 2 switch delivers wire-speed performance, superior port density, and a complete standard Layer 2 feature set to address the needs of Enterprise users. Only 1 rack unit high and featuring up to 10.1 million packets per second of wire-speed switching capacity, the EdgeIron 4802F is an excellent choice for Layer 2 10/100 edge applications in high-performance local-area networks. With an easy-to-use, industry-standard Command Line Interface (CLI), Telnet based interface, Web based GUI, standard SNMP interface, and RADIUS-based authentication, EdgeIron 4802F is easy and secure to configure, deploy, and maintain.

Features of the EdgeIron 4802F include:

- Wire-Speed Performance on All Ports, up to 10.1 Million Packets per Second Switching Capacity
- Compact 1 Rack Unit Height Featuring 48 10/100 Fast Ethernet Ports and up to 2 Gigabit Ethernet Uplinks
- Complete Standard Layer 2 Features Including 802.1Q VLAN Tagging and IEEE 802.1d Spanning Tree Algorithm for Network Reliability
- Support for Generic VLAN Registration Protocol (GVRP), Generic Multicast Registration Protocol (GMRP) and Internet Group Management Protocol (IGMP) Snooping
- Robust Quality of Service Features Including IEEE 802.1p Class of Service and Type of Service
- Low Power Consumption for Reduced Operation Costs, Auto-Sensing Power, and Built-in Temperature Sensors
- Extensive Management and Monitoring Features Including Industry-Standard CLI, Web-Based GUI, Integrated SNMP Agent, and RMON Support

The EdgeIron 4802F features 48 10/100 ports and up to 2 Gigabit Ethernet uplink ports in a compact package. This makes it ideal for deployment in Enterprise wiring closets where space is at a premium. In addition to saving space, EdgeIron 4802F features an auto-sensing 100-240 VAC power supply, making it easy to deploy in a variety of environments. The power supply on EdgeIron 4802F is optimized for low power consumption, rated at a maximum of just 55 Watts. This results in lower electricity costs and reduced need for additional power in wiring closets. With built-in temperature sensors, the EdgeIron 4802F alerts network operators via an SNMP trap when the current temperature exceeds certain levels, to prevent any cooling problems. With 1000BaseSX or 1000BaseLX Gigabit uplink options, network managers have the flexibility to extend the Gigabit Ethernet distance up to six (6) kilometers.

DATA SHEET

EdgeIron 4802F



EdgeIron 4802F Key Features and Benefits

Performance and Scalability

Enterprise networks require cost-effective performance, scalability, and density to support rapid network expansion and mission-critical business applications. The EdgeIron 4802F provides up to 4 Gbps of aggregate bandwidth from the workgroup or wiring closet to LAN backbones using 2 full-duplex wire-speed Gigabit uplinks. With 10.1 Million packets per second switching performance, support for 8,000 MAC addresses, and 512 active VLANs (each VLAN tag value may range up to 4,096 for 802.1q), EdgeIron 4802F provides best-in-class performance and capacity. The excellent performance and scalability of the EdgeIron 4802F makes it well suited to the demands of mid-range Enterprise wiring closet deployments and workgroup aggregation applications.

Complete Standard Layer 2 Feature Set

The EdgeIron 4802F ships with a complete standard Layer 2 feature set including 802.1Q VLANs, 802.1p based QoS, single Spanning Tree Protocol, 802.3x based flow control, BootP, TFTP, Generic VLAN Registration Protocol (GVRP), Generic Multicast Registration Protocol (GMRP) and port mirroring. With support for two queues per port based on 802.1p, EdgeIron 4802F provides critical Quality of Service (QoS) features for next generation applications such as Voice over IP and streaming audio or video.

Cost-Effective Solution

The EdgeIron 4802F Layer 2 switch is cost-effective for providing high-performance connectivity in a variety of network edge deployments. By offering wire speed performance in a high-density, economical package, the EdgeIron 4802F enables CIOs and network managers to build out the edge of their networks cost-effectively and efficiently. Foundry Networks offers a complete line of complementary Layer 2/3 stackable and chassis products for the edge and core of the Enterprise, including the FastIron and BigIron product families, that can be deployed in conjunction with the EdgeIron 4802F to create a complete, robust, scalable, and world-class high-performance network.

DATA SHEET

EdgeIron 4802F

EdgeIron 4802F Deployment Applications

Enterprise Workgroup Aggregation

EdgeIron 4802F is designed for a variety of edge Layer 2 applications, including workgroup aggregation and Enterprise wiring closet deployments. For simple Enterprise workgroup aggregation deployments in mid-size and large Enterprise environments, network managers can deploy a single device to manage workgroups of individual users. This cost-effective solution can aggregate 48 10/100 users on up to 2 Gigabit Ethernet uplinks connected to a larger wiring closet device such as the Foundry FastIron II Plus, as shown in figure 1, below.

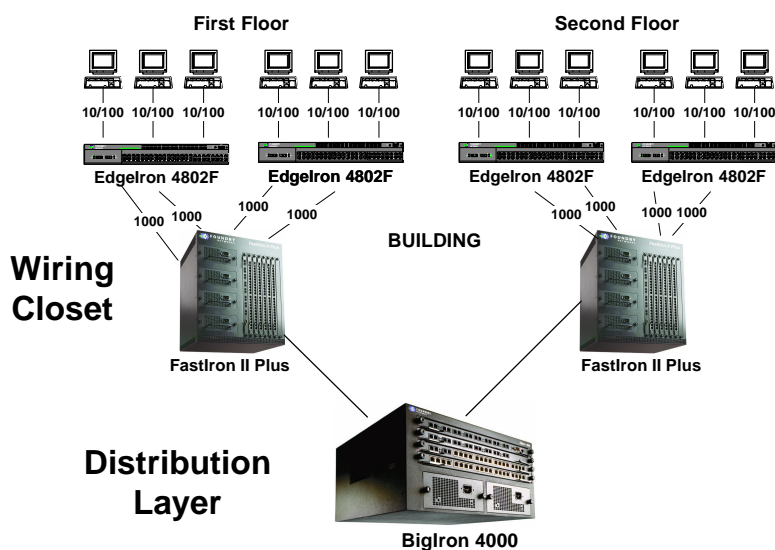


Figure 1: Workgroup Aggregation

DATA SHEET

EdgeIron 4802F

Enterprise Wiring Closet

The EdgeIron 4802F is also well suited to Enterprise wiring closet deployments, where one or several EdgeIron 4802Fs can be placed on each floor of a building to provide 10/100 Mbps connectivity to the desktops, as shown in figure 2, below. This configuration enables network managers to deliver auto sensing and auto negotiating 10/100 Mbps ports to each user. This further enables an easy migration from 10 Mbps to 100 Mbps connections for the desktops while supporting next-generation applications such as Voice over IP.

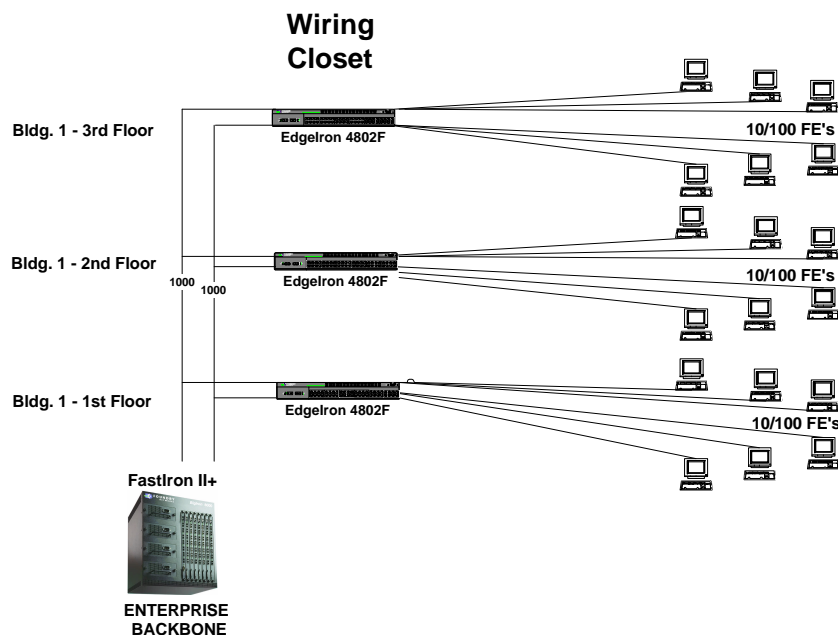


Figure 2: Wiring Closet Application

DATA SHEET

EdgeIron 4802F



Technical Specifications

Performance:

Up to 10.1 Mpps
8,000 MAC Addresses
512 active VLANs

Standards Compliance:

802.1d Spanning Tree
802.1p Traffic Prioritization
802.1q VLAN Tagging
802.3x Flow Control
802.3 10BaseT
802.3u 100BaseTX
802.3z 1000BaseSX

Protocol Support:

UDP RFC 768
TFTP RFC 783
IP RFC 791
ICMP RFC 792
TCP RFC 793
ARP RFC 826
Telnet RFC 854
BootP RFC 951
Host Requirements RFC 1122
Bootstrap Extensions RFC 1542
HTTP RFC 2068

Network Management:

SNMP Client
MIBs: RFC 1157 SNMP, RFC 1213 MIB II,
RFC 1493 Bridge MIB, RFC 1757 RMON
Telnet and Java-based Web management
Interface: In-Band
Local Interface: RS-232 console interface,
RJ-45 Connector
SW Download: via TFTP
Industry-standard CLI

Interfaces:

10/100BaseT/TX:

- Connectors: RJ-45
- Auto-Negotiation
- Transmission: Full/Half-Duplex
- Range: 100m

1000BaseSX (multimode):

- Connectors: LC
- Transmission: Full Duplex
- Optical Budget: 9dB
- Range: 220m for 62.5/125μ, 850nm
- Range: 550m for 50/125μ, 850nm

1000BaseLX (single mode):

- Connectors: LC
- Transmission: Full Duplex
- Optical Budget: 9dB
- Range: 6km for 9/125μ, 1310nm

Physical Dimensions:

1.75"h x 17.5"w x 14.25"d (4.4 x 44.5 x 36 cm)
Weight: 11.5 lbs (5.2 kg)

Power Requirements:

Power: 100 – 240 VAC, 50 – 60 Hz, 55W max.

Environmental:

Operating Temp: 0°C to 45°C
Operating Humidity: 10% to 90%, non-condensing

Emission and Safety Regulations:

FCC Class A, VCCI Class 1, UL, CUL,
CE (EMI, EMS, LVD)

Warranty:

1-year hardware
90-day software
Mounting Options

Specifications subject to change without notice.

© 2001 Foundry Networks, Inc. All Rights Reserved.